

CR 11 B

Rammer

OPERATING INSTRUCTIONS

Translation of the original Instructions



SAINT-GOBAIN





CE Declaration of conformity

The undersigned manufacturer: **SAINT - GOBAIN ABRASIVES S.A.**
190, BD. J. F. KENNEDY
L-4930 BASCHARAGE

Declares that this product: Norton clipper **CR 11 B**

Code: **70184632595**

Is in conformity with the following Directives:

"MACHINES" 2006/42/CE

"NOISE" 2000/14/CE

And European standard :

- **EN 500-1** Mobile road construction machinery. Safety - Part 1: Common requirements
- **En 500-4** Mobile road construction machinery - Safety - Part 4: Specific requirements for compaction machines

Valid for machines as of serial number : 450xxxxxxx

Storage site for the technical documents :

Saint-Gobain Abrasives 190, Bd. J. F. Kennedy 4930 BASCHARAGE, LUXEMBOURG

This declaration of conformity loses its validity when the product is converted or modified without agreement.

Bascharage, le 14.03.2023 :

François Chianese, executive officer and responsible for the technical file.
Bascharage, Luxembourg.



Declaration of conformity

The undersigned manufacturer:

SAINT - GOBAIN ABRASIVES S.A.
190, BD J.F. KENNEDY
L- 4930 BASCHARAGE

Declares that this product:

Compactor **CR 11 B**

Code: **70184632595**

is in conformity with the following standard:

- ***Supply of Machinery (Safety) Regulations 2008***
- ***Noise Emission in the Environment by Equipment for use Outdoors Regulations 2001***

And European standard :

- ***EN 500-1*** Mobile road construction machinery. Safety - Part 1: Common requirements
- ***EN 500-4*** Mobile road construction machinery - Safety - Part 4: Specific requirements for compaction machines

Valid for machines with a serial number greater than: 450xxxxxxx

Authorised Representative:

SAINT-GOBAIN ABRASIVES

Unicorn House • Unit 1, Amison Close

Redhill Business Park • Stafford • England • ST16 1WB

This declaration of conformity loses its validity when the product is converted or modified without agreement.

Bascharage, 14.03.2023

François Chianese, executive officer and responsible for the technical file.
Bascharage, Luxembourg.

Norton Clipper CR 11 B

OPERATING INSTRUCTIONS

TABLE OF CONTENTS

<u>1</u>	<u>BASIC SAFETY INSTRUCTIONS</u>	<u>6</u>
1.1	<i>Symbols</i>	6
1.2	<i>Machine plate</i>	7
1.3	<i>Safety instructions for particular operating phases</i>	7
<u>2</u>	<u>MACHINE DESCRIPTION</u>	<u>8</u>
2.1	<i>Short description</i>	8
2.2	<i>Layout</i>	9
2.3	<i>Technical DATA</i>	11
2.4	<i>Vibration measurements</i>	11
2.5	<i>Sound measurements</i>	11
<u>3</u>	<u>ASSEMBLY AND COMMISSIONING</u>	<u>12</u>
3.1	<i>Starting the machine</i>	12
3.2	<i>Quick reference guide for operation</i>	12
3.3	<i>Battery fixation and starting the machine</i>	13
3.4	<i>Charging the battery</i>	14
<u>4</u>	<u>OPERATING THE MACHINE</u>	<u>14</u>
4.1	<i>Site of work</i>	14
4.2	<i>Preparing the site</i>	14
<u>5</u>	<u>TRANSPORT AND STORING</u>	<u>14</u>
5.1	<i>Transport procedure</i>	14
5.2	<i>Long period of inactivity</i>	14
<u>6</u>	<u>MAINTENANCE AND SERVICE</u>	<u>15</u>
6.1	<i>Maintenance of the machine</i>	15
6.2	<i>Maintenance of the eGX Honda</i>	16
<u>7</u>	<u>FAULT: CAUSES AND CURES</u>	<u>17</u>
7.1	<i>Fault –finding procedures</i>	17
7.2	<i>Troubles-shooting guide</i>	17
7.3	<i>Customer service</i>	18
7.4	<i>Spare parts</i>	19

1 BASIC SAFETY INSTRUCTIONS

The Norton Clipper CR 11 B is exclusively designed for compaction mainly on construction sites. Uses other than the manufacturer's instructions shall be considered as contravening the regulations. The manufacturer shall not be held responsible for any resulting damage. Any risk shall be borne entirely by the user. Observing the operating instructions and compliance with inspection and servicing requirements shall also be considered as included under use in accordance with the regulations.

1.1 Symbols

Important warnings and pieces of advice are indicated on the machine using symbols. The following symbols are used on the machine:



Read operator's instructions



Ear protection must be worn



Hand protection must be worn



Eye protection shall be worn



For dry cutting in exceptionally cases , wear additional dust



Shoes protection must be worn

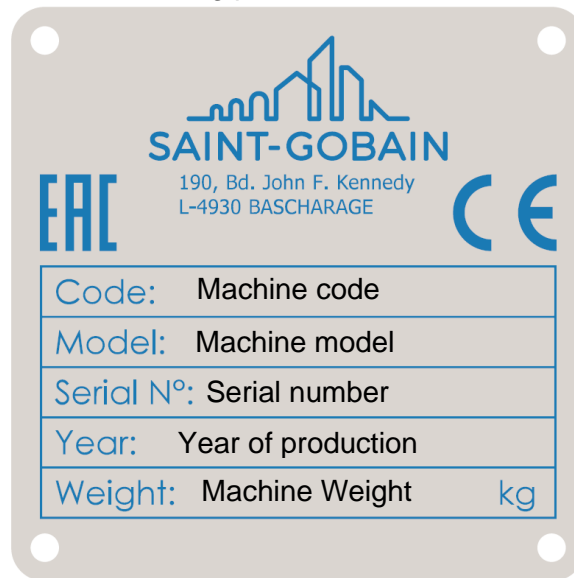


Use only the integrated crane hook if you lift up

Shoes protection must be worn

1.2 *Machine plate*

Important data can be found on the following plate located on the machine:



1.3 *Safety instructions for particular operating phases*

Before starting the work

- Before commencing work, make yourself familiar with the working environment at the place of use. The working environment includes: obstacles in the area of work and manoeuvre, the firmness of the floor, necessary protection at the site relating to public thoroughfares and the availability of help in the event of accidents.
- This machine must only be used for its intended purpose, and must be operated only by the well-trained personnel.
- Know how to stop the engine quickly, and understand the operation of all controls BEFORE attempting to operate the machine.
- The machine must be operated on ground where stability is guaranteed. When working near the rim of excavated trenches, be alert to potential caving edges, falling rocks, and slides.
- Do not attempt to run the machine with any of the covers, labels, and/or any other components removed from the machine. Unauthorized alteration or modification of the engine or the machine is prohibited, as it will affect the machine's performance and may lead to danger in operation.

2 MACHINE DESCRIPTION

Any modification, which could lead to a change in the original characteristics of the machine, may be done only by Saint-Gobain Abrasives who shall confirm that the machine is still in conformity with the safety regulations.

2.1 *Short description*

The rammer CR 11 B is suitable for repairing asphalted surfaces, for small compacting jobs and for preparing green areas

As with all other NORTON products, the operator will immediately appreciate the attention given to detail and quality of materials used in construction. The machine and its component parts are assembled to high standards assuring long life and minimum maintenance.

2.2 Layout



Handlebar (1)

Jig welded steel construction is connected by 4 shock mount on the frame of the machine to reduce the vibrations reach the operator

Lifting eye (2)

To lift the machine easily and safely, a lifting eye is located over the engine. This allows a balanced lifting of the machine.

Battery motor and control panel (3)

The eGX battery engine from Honda which integrates the battery directly on the engine

On the control panel you can find:

- The Power button
- The ON/OFF switch
- The 3 LEDs (green, orange and red) to indicate the state of the motor
- The Speed selector (3 speeds available: 3000 rpm, 3300 rpm and 3600 rpm)

Transfert box (4)

oil bath transfer box which transmits the vibration to the soleplate via the piston / cylinder

Piston/Cylinder (5)

Transmits the vibration to the soleplate

SolePlate (6)

The sole plates have rounded edges and raised to avoid marking the surface

transport handle (7)

2.3 *Technical DATA*

Model	Norton Clipper CR 11 B
Ramming soleplate Width x Length	250x330mm
Operating weight with battery	72 kg
Overall Lenth	720mm
Overall Heigth	1050mm
Overall Wigth	400mm
Centrifugal force	11 kN
Impact Number per minutes	640-680
Stroke	50-75mm
Engine	eGX Honda
Engine power	kW 1,8
rpm	3600

Battery technical data	
Type de battery	Battery lithium ion rechargeable
Tension	DC 72V
Power capacity	720Wh
Rated capacity	10.0Ah
Temperature range	
Charging	5 à 30°C
Operating	-15 à 40°C
Storage	-5 à 30°C
Charger technical data	
Charger type	CC/CV quick charger
Input voltage	AC 100 à 240V
Input frequency	50/60Hz
Output voltage	DC 82.8V
Output current	8.5A

2.4 *Vibration measurements*

Products are tested for hand/arm vibration level in accordance with EN500-4:2001

The hand/harm vibration level is **6,5** m/s²

The rammer has been tested on a surface, produced with not cleaned stone crusher grit, with 16 mm medium diameter (with components which have diameter that goes from 10 to 20 mm).

2.5 *Sound measurements*

The product has been produced in accordance with the standard 2000/14/CE, procedure I annex VI. Measured sound power level **105** [dB(A)] and guaranteed sound power level **108** [dB(A)] on a significant equipment.

3 ASSEMBLY AND COMMISSIONING

3.1 Starting the machine

Adjust the machine arm to a comfortable position. To do this, loosen the arm handle and adjust the arm to a right angle, then retighten the handle.

3.2 Quick reference guide for operation

How to start

- 1 Press STOP
- 2 Press POWER
- 3 Press START
- 4 Change Speed

Operating temperature range **-15 to 40 °C**

Green LED ON

Green LED OFF

MIN. MAX. (Q4, S3 type)

How to stop

- 1 Press STOP

Attach Battery Pack

BATTERY CHARGE LEVEL

- Fully charged
- Sufficiently charged
- Low battery power Charge Battery Pack

Pre-operation check!

* Read and understand the Owner's Manual before operating the DC Power Unit.

Safety Precaution

BATTERY CHARGER Charge

Charging temperature range **5 to 30 °C**

Plug IN

BATTERY PACK

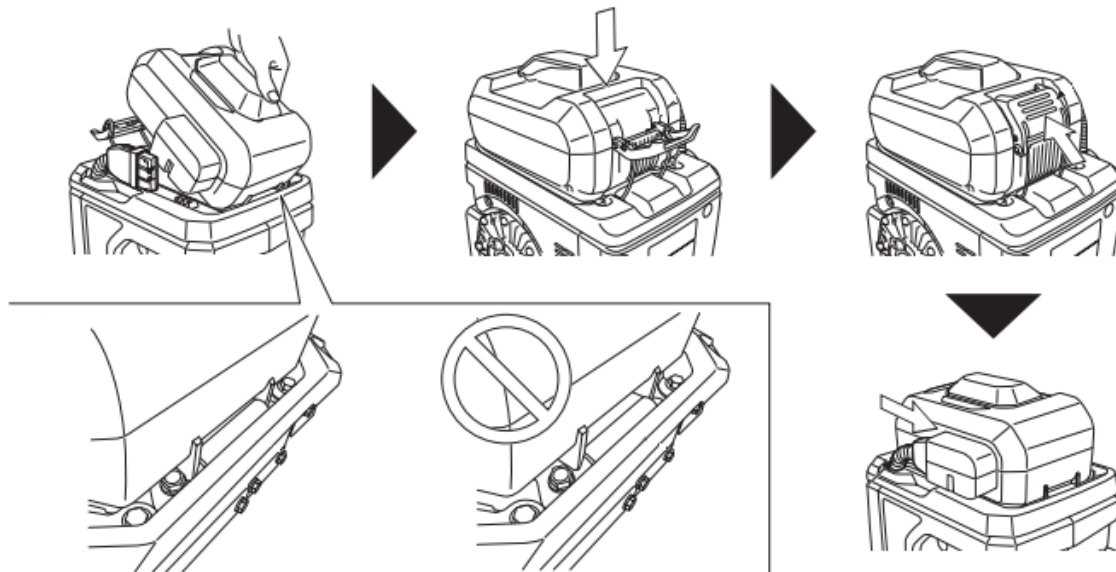
MOTOR UNIT

Green LED ON

Green LED OFF

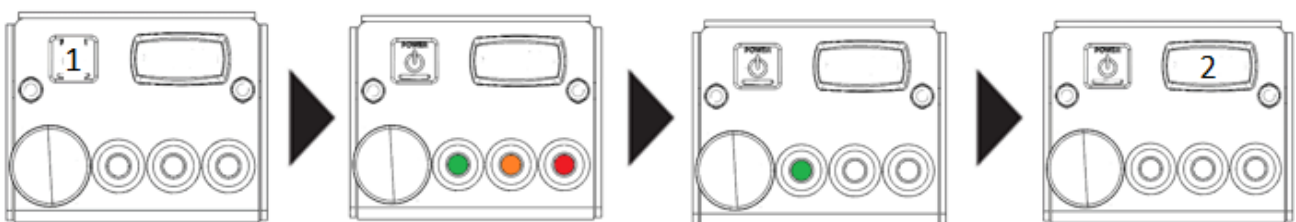
©2021 Honda Motor Co., Ltd. SZ5KJ310

3.3 Battery fixation and starting the machine



- Switch on the battery by pressing the Power button (1) (the switch must be in the OFF position) the 3 LEDs will lit.
- Wait until the green LED on the control panel is the only one lit
- Put the switch to ON to start the motor and the rotation of the blade (2)

NOTE: When removing the battery, remember to replace the plastic cover on the motor plug to keep it clean.



NOTE: These operations must be done each time the engine is restarted (even if the engine has just been stopped)

To stop the machine, put the switch on the control panel to OFF.

CAUTION: when the machine is switched off, the tools will continue turning slowly to complete stop. Be therefore very careful to avoid injuries.

3.4 Charging the battery

This machine works with a battery, so you have to think about charging it. A fast charger is available for this. It will take between 1h and 1h30 to recharge a full battery charge. When charging the battery, the charger fan turns on to prevent the battery from heating up. The charger will stop automatically once the battery is fully charged, but the fan will remain on for a while to keep the battery cool.

NOTE: The battery must not be charged at a temperature equal to or lower than 5°C.

Indicator Display	Charge Level
	Fully charged.
	High ↑ Low Charging.
	Charging has stopped.

■: On, ✱: Flashing, □: Off

4 OPERATING THE MACHINE

4.1 Site of work

- Remove from the site anything, which might hinder the working procedure!
- Make sure the site is sufficiently well lit!
- Make sure you have a continual adequate view of the working area so you can intervene in the working process at any time!
- Keep other staff out of the area, so you can work securely.

4.2 Preparing the site

it will be necessary to identify the characteristics of soils and material to study their ability.

5 TRANSPORT AND STORING

5.1 Transport procedure

Conform yourself to work regulations, in order to transport the machine safely. To help you transport the machine, you can remove the transport tube from under the handle and located in the front hole of the machine.

5.2 Long period of inactivity

If the machine is not going to be used for a long period, completely clean the machine and disassemble the tools. The storage site must be clean, dry and at a constant temperature.

6 MAINTENANCE AND SERVICE

6.1 *Maintenance of the machine*

To ensure a long-term quality from the use of the Clipper compactors CR11 B, please follow the maintenance plan below:

- Check the transfer box cover (daily)
- Change the oil in the transfer box after 200 hours

Cleaning the machine

The life of your machine depends on its maintenance. Clean it at the end of each day.


6.2 Maintenance of the eGX Honda

Maintenance Schedule


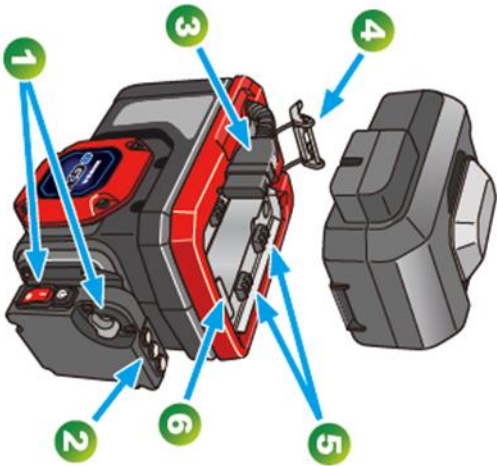
Regular Service Period	Each use	Every 5 Years or 500 hrs.	Clean
1	Exterior	Check not damaged	
1	Switch Speed control lever	(Applicable type)	
2	LED	(Applicable type)	
3	Power cable	Check not damaged	
4	Battery fastener	Check not damaged	
5	Rubber support	Check not damaged	
6	Battery hook	Check not damaged	
	Wire harness	If necessary	
	Battery fastener		
	Rubber support		
	Battery hook		
	Rubber mount		
	Stopper bolt		
	Stopper rubber		
	Drain hole		
	Set speed	When required If an unusual sound is heard	

Take the DC Power Unit to your Honda servicing dealer.

1 Switch Speed control lever
Check work properly (start and stop) (change speed)



2 LED Check all LED light ON when POWER is turned on

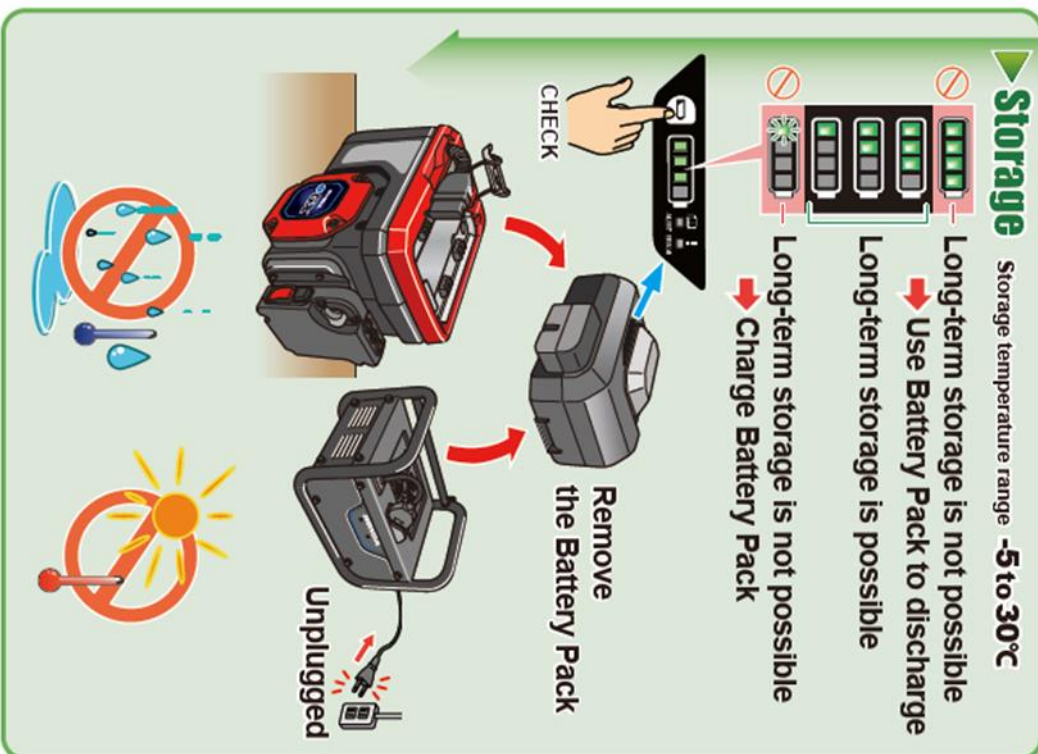



Storage Storage temperature range **-5 to 30°C**

- Long-term storage is not possible
- Use Battery Pack to discharge
- Long-term storage is possible
- Long-term storage is not possible
- Charge Battery Pack

Remove the Battery Pack

Unplugged



* Read and understand the Owner's Manual before operating the DC Power Unit.

7 FAULT: CAUSES AND CURES

7.1 *Fault –finding procedures*

Should any fault occur during the use of the machine, turn it off. Any works dealing with the engine of the machine can only be carried out by a qualified technician.

7.2 *Troubles-shooting guide*

TROUBLE	POSSIBLE CAUSE	REMEDY
Engine won't start.	Defective switch	CAUTION : can only be solved by qualified electrician
	Battery low	Check the charge of the battery (recharge it if needed)
	Engine damaged	Contact an engine service center
Engine runs, but the machine	Clutch slipping.	Dismantle the clutch assembly, and clean the shoe and drum with proper solvent. Replace the shoe if necessary.
	Crank/Gear unit damaged.	Contact dealer.

7.3 Customer service

When ordering spare parts, please mention:

- The serial number (7 digits).
- The code of the part.
- The exact denomination.
- The number of parts required.
- The delivery address.
- Please indicate clearly the means of transportation required such as "express" or "by air". Without specific instructions, we will forward the parts through the means which seem appropriate to us - -- but which is not always the quickest way.

Clear instructions will avoid problems and faulty deliveries.

If not sure, please send us the defective part.

In the case of a warranty claim, the part must always be returned for evaluation.

Spare parts for the motor can be ordered with the manufacturer of the motor or with their dealer, which is often quicker and cheaper.

This machine has been manufactured by: Saint-Gobain Abrasives S.A.

190, Bd. J. F. Kennedy

L- 4930 BASCHARAGE

Grand-duché de Luxembourg.

Tel.: 00352-50 401-1

Fax: 00352- 50 16 33

<http://www.construction.norton.eu>

e-mail: sales.nlx@saint-gobain.com

7.4 Spare parts

In order to consult the spare parts lists, we invite you to visit the after-sales website of Norton Clipper by using the following address:

<https://spareparts.nortonabrasives.com>

For a quick access, you can also use the QR Code shown below using your mobile phone:



This electronic catalogue provides exploded views and spare parts lists for different machines designed by Norton Clipper so you can find references you need.

Guarantee can be claimed and technical support obtained from your local distributor where machines, spare parts and consumables can be ordered as well:

SAINT-GOBAIN ABRASIVES
INDUSTRIEWEG 21
9420 ERPE-MERE
BELGIUM
TEL: +32(0) 2 267 21 00

SAINT-GOBAIN CONSTRUCTION
PRODUCTS CZ A.S
DIVIZE ABRASIVES
SMRČKOVA 2485/4
180 00 PRAHA 8
CZECH REPUBLIC
TEL: +420 255 719 326
FAX: +420 255 719 321

SAINT-GOBAIN ABRASIVES A/S
DYBENDALSVÆNGET 2,
DK-2630 TAASTRUP
DENMARK
TEL: +45 4675 5244

PO BOX 643706
FORTUNE TOWER OFFICE 2106
JLT BLOCK C
(NEXT TO METRO STATION)
JUMEIRA LAKE TOWER, DUBAI
UNITED ARAB EMIRATES
TEL: +971 4 431 5154
FAX: +971 4 431 5434

SAINT-GOBAIN ABRASIFS
RUE DE L'AMBASSADEUR - B.P.8
78 702 CONFLANS CEDEX
FRANCE
TEL: +33 (0)1 34 90 40 00
FAX: +33 (0)1 39 19 89 56

SAINT-GOBAIN ABRASIVES GMBH
BIRKENSTRASSE 45-49
D-50389 WESSELING
GERMANY
TEL: +49 (0) 2236 703-0
FAX: +49 (0) 2236 703-730

SAINT-GOBAIN ABRASIVES KFT.
1225 BUDAPEST
BÁNYALÉG U. 60/B.
HUNGARY
TEL: +36 1 371 22 50
FAX: +36 1 371 22 55

SAINT-GOBAIN ABRASIVI S.P.A
VIA PER CESANO BOSCONI 4
I-20094 CORSICO MILANO
ITALY
TEL: +39 02 44 851
FAX: +39 02 44 78 266

SAINT-GOBAIN ABRASIVES S.A.
190 RUE J.F. KENNEDY
L-4930 BASCHARAGE
GRAND DUCHE DE LUXEMBOURG
TEL: +352 50 401 1
FAX: +331 83 717 792
NO. VERT (FRANCE): 0800 906 903

SAINT-GOBAIN ABRASIFS, S.A.
2 ALLÉE DES FIGUIERS
AIN SEBAÂ - CASABLANCA
MOROCCO
TEL: +212 5 22 66 57 31
FAX: +212 5 22 35 09 65

SAINT-GOBAIN ABRASIVES BV
GROENLOSEWEG 28
7151 HW EIBERGEN
P.O. BOX 10
7150 AA EIBERGEN
THE NETHERLANDS
TEL: +31 545 466466
FAX: +31 545 474605

SAINT-GOBAIN ABRASIVES AS
KARIHAUGVEIEN, 89
0186 OSLO
NORWAY
TEL: +47 63 87 06 00
FAX: +47 63 87 06 01

SAINT-GOBAIN HPM POLSKA SP. Z O.O.
UL. NORTON 1, 62-600 KOŁO
62-600 KOŁO
POLAND
TEL: +48 63 26 17 100
FAX: +48 63 27 20 401

SAINT-GOBAIN ABRASIVOS, L. DA
ZONA INDUSTRIAL DA MAIA
I-SECTOR VIII, NO. 122
APARTADO 6050
4476 - 908 MAIA
PORTUGAL
TEL: +351 229 437 940
FAX: +351 229 437 949

SAINT-GOBAIN GLASS
BUSINESS UNIT ABRASIVI
PUNCT DE LUCRU : LOC.VETIS, JUD.
SATU MARE 447355
STR. CAREIULUI 11
PARC INDUSTRIAL RENOVATIO
ROMANIA
TEL: +40 261 839 709
FAX: +40 261 839 710

SG HPM RUS
58, F. ENGELS STR.
STROENIE 2
105082 MOSCOW
RUSSIA
TEL: +74 955 408 355
FAX: +74 959 373 224

SAINT-GOBAIN
ABRASIVES (PTY) LTD
2 MONTEER ROAD
ISANDO 1600
P.O. BOX 67
SOUTH AFRICA
TEL: +27 11 961 2000
FAX: +27 11 961 2184/5

SAINT-GOBAIN ABRASIVOS, S.A.
CTRA. DE GUIPÚZCOA, KM. 7,5
E-31195 BERRIOPLANO (NAVARRA)
SPAIN
TEL: +34 948 306 000
FAX: +34 948 306 042

SAINT GOBAIN ABRASIVES AB
GÅRDSFOGDEVÄGEN 18A
168 66 BROMMA • SVERIGE
SWEDEN
TEL: +46 8 580 881 00
FAX: +46 8 580 881 30

SAINT-GOBAIN INOVATIF MALZEMELER
VE ASINDIRICI SAN. TIC. AS.
ALTAYÇEŞME MAH. ÇAMLI SOK. NO:21
ESAS OFISPARK KAT:9 34843
MALTEPE, İSTANBUL • TURKEY
TEL: 0090-216-217 12 50
FAX: 0090-216-442 40 74

SAINT-GOBAIN ABRASIVES LTD.
UNICORN HOUSE UNIT 1, AMISON CLOSE
REDHILL BUSINESS PARK
STAFFORD ST161WB
UNITED KINGDOM
TEL: +44 1785 279 553
FAX: +44 1785 213 487



Saint-Gobain Abrasifs
190 Rue J.F. Kennedy
L-4930 Bascharage
Grand Duché de Luxembourg
Tel: +352 50 401 1
Fax: +331 83 717 792
no. vert (France) 0800 906 903

www.nortonabrasives.com/fr-fr